



PRESERVING THE PAST, INSPIRING THE FUTURE.

380 School Road NW Hutchinson, MN 55350

Visit our Website: www.mcleodhistory.org phone: 320-587-2109 e-mail: info@mcleodhistory.org

Pork Chop Supper Fundraiser



With Music by Wally Pikal

\$12-Adults & \$6-Kids

Monday, June 8th-4:30-7PM
Museum Educational Media Center



The McLeod County Historical Society would like to invite you and your family to our Annual Pork Chop Supper Fundraiser, with musical guest-Wally Pikal! Wally will be entertaining us with his one man band show. Mr. Pikal will feature many old time favorite tunes, that the whole family will enjoy. Wally will be performing from 5-6 PM in the Museum's Educational Media Center.

Once again, master griller, Bill Arndt will be overseeing the grilling and seasoning of the delicious pork chops! Meals will be available for carryout or dining in at 4:30 PM, with extra pork chops for purchase with your meal or as a carryout for just \$3 each. Each meal will include: A tasty Benny's Meat Market Pork Chop, Mashed Potatoes and Gravy, Green Beans & Applesauce-all compliments of McCormick's, French Bread from Subway, and to top it all off, an Ice Cream Sundae for dessert. We hope to see you at the Museum for a great meal, outstanding music and a terrific cause-preserving our History!

In this Issue:

MCHS Pork Chop Supper Fundraiser.....	1
Monday, June 8th 4:30-7PM- Museum Educational Media Center	
Director's Review.....	2
"Weseloh Wagon Repair" –A Local Mini-Documentary.....	2
Thursday, June 4th 7PM- Museum Educational Media Center	
District #6 School -Historic Marker Dedication.....	3
Sunday, June 28th 2PM-Rich Valley Wildlife Management Area (WMA)-Virgil Voigt Tract	
Historical Excerpts from- "History of the Country Schools of McLeod County" -MCHS 2015 Theme.....	4-5
Spotlight on the Collection/Artifacts of the Month.....	6
Contributions, Memorials & Donations.....	7
Business Sponsors/ "Historical Happenings"-KDUZ Radio Show.....	8

McLeod County Historical Society

Mission Statement

The McLeod County Historical Society is dedicated to connecting with the past, understanding the present and making informed choices about the future by finding, preserving, explaining and sharing McLeod County history.

Membership Fees

Individual \$20, Family \$35
Business \$200
Individual Lifetime \$500

Board of Directors

Anne Hahn, President
Karen Hendricksen, Vice President
Tara Russell, Secretary
Gary Ziemer, Treasurer
Dave Horrmann, Mary Henke,
Stan Ehrke, Scott Rehmann and
Lowell Ueland

Executive Director

Lori Pickell-Stangel

Assistant

Peggy Paulson

Volunteer Staff

Gary Tessmer & Stan Ehrke,
Tech Support
Bev Swenson, Collections
Marlys Fredrick, Research
Currently Open, Archivist
Liz Schwarze-3-D Artifacts

McLeod County Museum

380 School Road NW
Hutchinson, MN 55350
(320) 587-2109
www.mcleodhistory.org
e-mail: info@hutchtel.net

Museum Hours

Monday: 10 a.m. to 4 p.m.
Thursday and Friday:
10 a.m. to 4:00 p.m.
Saturday: 1 to 4 p.m.

Also available by appointment

Closed:

Tuesday, Wednesday, Sunday

The McLeod County Historical Society Newsletter is published eleven times per year, monthly except for December/January.

Board of Director's Meeting

Fourth Monday of each
Month at 4 P M
Museum Educational Media Center



Director's Review:

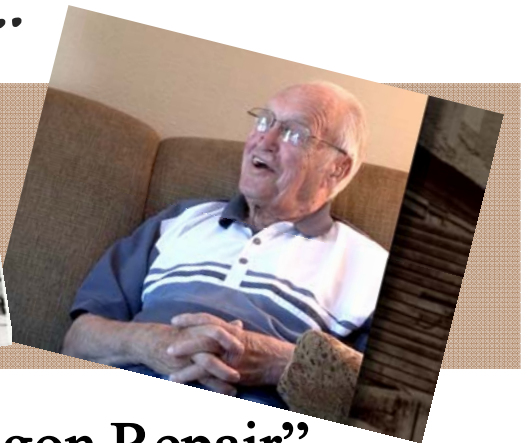
A HUGE Thank you to Ms. Julie Jensen, author of our latest book- "Breaking News". Below are photos of the terrific turnout for the book presentation last month. Julie used artifacts from the Museum's collection to define the sixteen decades of Hutchinson's unique History. Great job as always, Julie. You can still pick up a book at the Museum's Gift Shop for just \$20.

Membership prices are going up! Last chance to renew at our annual \$20 for an Individual membership-\$35 for a Family and -\$200 for a Business. We are extending this special offer of our old price until July 1st. After that- the price of an annual Individual membership will be-\$30, Family-\$40 and Business will be -\$300. We hope you will renew your membership for one or two years and save a little cash in the long run. As always, thank you for supporting McLeod County History!

The winners of our 7th Grade History projects are still on display in the MCHS Educational Media Center, so stop by and see what our future Historians have created. Big thanks to Citizens Bank and Trust Co. and Home State Bank for being sponsors for this community program!



HCVN presents...



"Weseloh Wagon Repair" a Local Mini-Documentary

Thursday, June 4th 2015
7pm - 8:30pm at the
MCHS Educational Media Center

Join us for a premier showing of this mini-documentary of local history! This half-hour program features Hutchinson native Datlaf Weseloh telling the story of his family's century-old business.

FREE ADMISSION

Program premieres from 7-7:30pm, followed by a social hour to talk with the Weseloh's and enjoy light refreshments.

District #6 School

Historical Marker Dedication

Sunday, June 28th 2-3 pm

Directions to Site:

From State Hwy 22 just North of Biscay, Proceed West 3.5 miles on County Hwy 11, turn South on Koala Road for 0.9 of a mile, parking area on West Side of Koala Road.



1954 photo of District #6 Schoolhouse

The McLeod County Historical Society and Museum is thrilled to announce the dedication of a historical marker for McLeod County Country School District #6. This small rural school is like so many that existed from the 1800s through the 1950s. Like many Districts in McLeod County, the schoolhouse is now gone-closing in 1954-with only a few foundation stones remaining. “Riverside or Koniska School”, as District #6 was once known, is unique in that the land where it once stood is now owned and managed by the Minnesota Department of Natural Resources. The Rich Valley Wildlife Management Area (WMA)-Virgil Voigt Tract- that was donated by the McLeod County Pheasants Forever chapter, is situated along the Crow River. The site is open to the public, making it the perfect location for our historical country school marker. This unique location gave the Museum the opportunity to mark the spot and commemorate the memory of not only District #6, but all rural country schools like it. As a part of our 2015 historical theme, “History of the Country Schools of McLeod County”, the Museum, with the help of the Minnesota DNR and our local Pheasants Forever Chapter, have created a marker that will ensure this part of our County’s educational history is never forgotten.

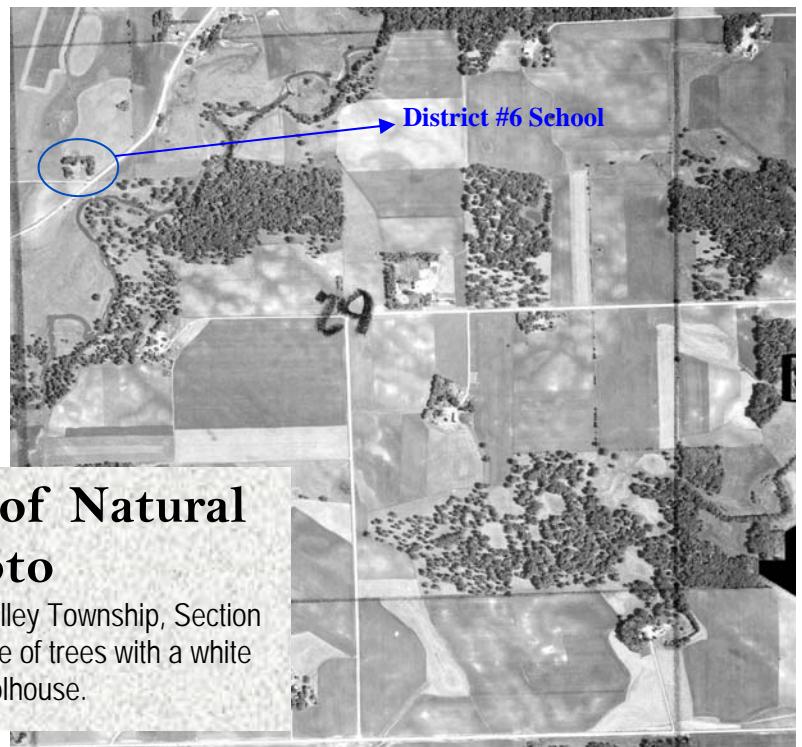
The sign will also showcase a project the Museum has been working on in 2015, collecting personal stories from Country school teachers and students. The sign will feature a QR code link, that when scanned by a smart phone, will share a personal story told by 8th grade graduate, Verda Graupman Templin. Verda was 95 years old when she made the video and will be one of many that will live on in the Museum’s collection.

Verda will also be honored at this dedication for her lifelong support of education and her families involvement in the establishment of the rural bus service in the area. To share your story- call us to setup an interview, or go to our website:

www.mcleodhistory.org and click on the Share your country school memories link on the home page.



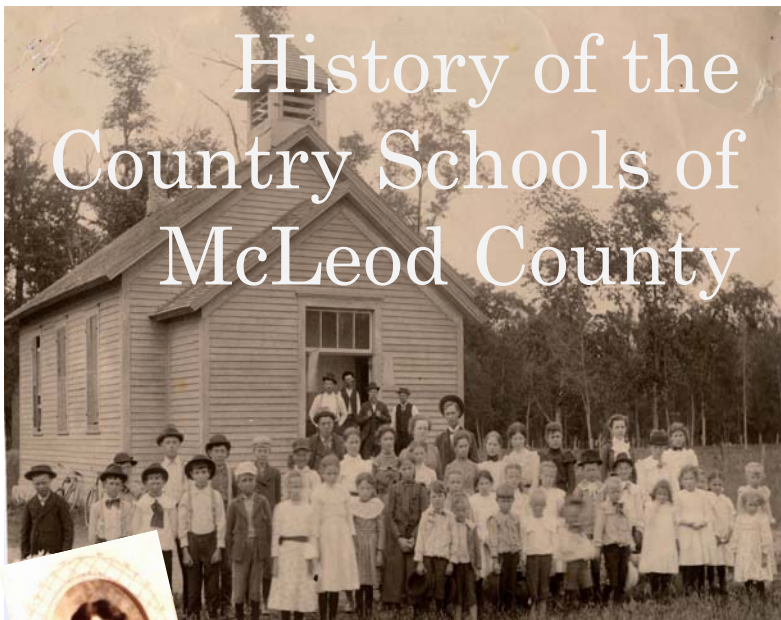
Sign provided by McLeod County Chapter of Pheasants Forever



1955 Minnesota Department of Natural Resources Aerial Photo

The photo shows the location of the schoolhouse in Rich Valley Township, Section 29, NW quarter. The circled area above shows a small grove of trees with a white square on the right side, which was the schoolhouse.

History of the Country Schools of McLeod County



The McLeod County Historical Society is thrilled to announce our 2015 Historical theme, "History of the Country Schools of McLeod County"! The Museum will feature the development of free public education in the state of Minnesota and

in McLeod County. We will feature our collection of country school artifacts, photographs and documents that help tell the story of rural McLeod County education. We are also looking for your memories of teaching and/or attending a McLeod County country school. Contact us or go to our website to share your story! I think I hear the school bell ringing...so don't be late for class—and be sure to join us for a year long look at all things country school!

District # 21-Acoma Township:

Known as the "Pierce School"

Organized in 1869 and closed in 1958

**Taken from the Glencoe Register Newspaper,
February 14th, 1889**

School Dist. No. 21 Acoma. School closed Feb. 4th, with 30 pupils enrolled; length of term was 4 months. Wages \$35 per month; two visits were made by the clerk; two by the County Superintendent of Schools; five by other persons; four pupils in A grade; six in B grade; four in C grade; eight in D grade; and 17 in E grade. It is the Teachers fourth term in the district.

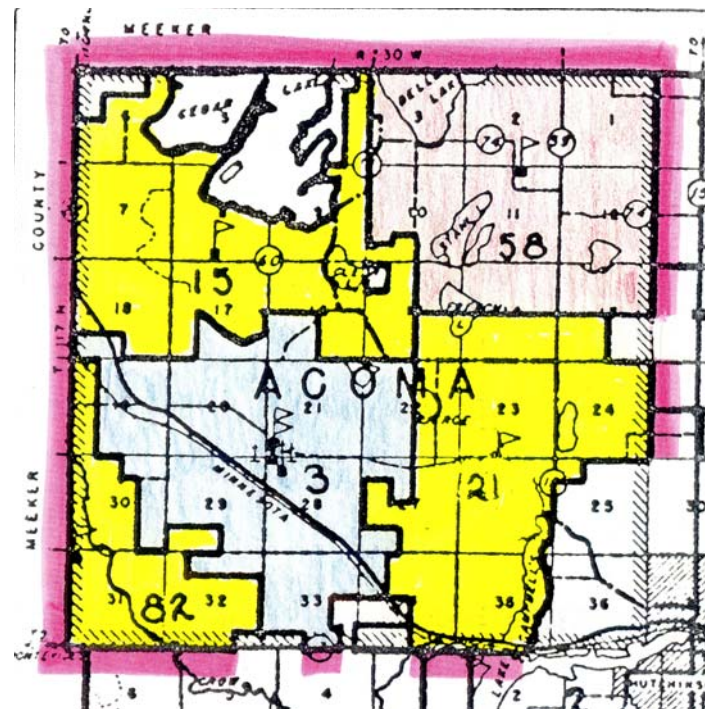
May Dearbom, Teacher



Photo of District # 21, "Pierce School" Group of school children in front of Brick Schoolhouse-District #21 School


Large group of Unidentified school children. Photo taken in 1905 in Acoma Township. Teacher is identified as Dorothy Jacobson Tews. It was Nina Dearborn's first first year of school Photographed by C. N. Balswin, Hutchinson, MN –From the Dearborn Family photo collection

**MCHS Photo Collection
Accession # 2005-0121-022**



Acoma Township Rural Country Schools:

- District # 3
- District # 15
- District # 21
- District # 58
- District # 82

Schoolhouse location = 

District # 84-Bergen Township:

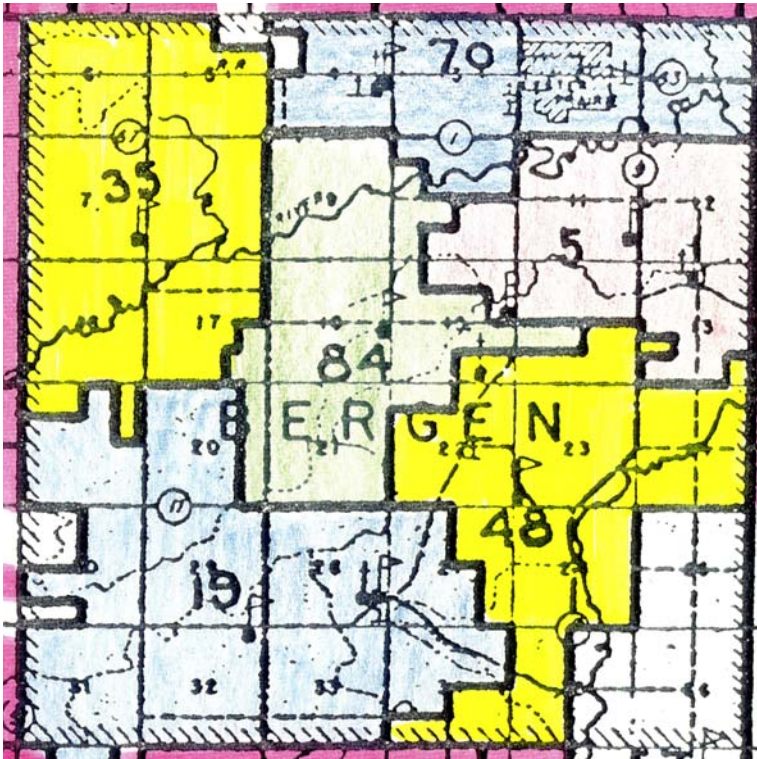
Known as the “Kuhlmann or Whittier School”

Organized in 1902 and closed in 1954

Taken from Lester Prairie Community, 1886-1986 History Book, pp78-79

School District #84 was organized in 1902 in Section 16, Bergen Township on the northeast corner of the William Dammann farm. One half acre of land was secured at the cost of \$17.42 with the stipulation in the contract that whenever not used for school purposes, it would revert back to the land owner. They had a gross of \$1,061, borrowed \$900 through the state school fund, and floated a bond for \$200. The first school board was William Dammann, Henry Kuhlmann and August Boesche.

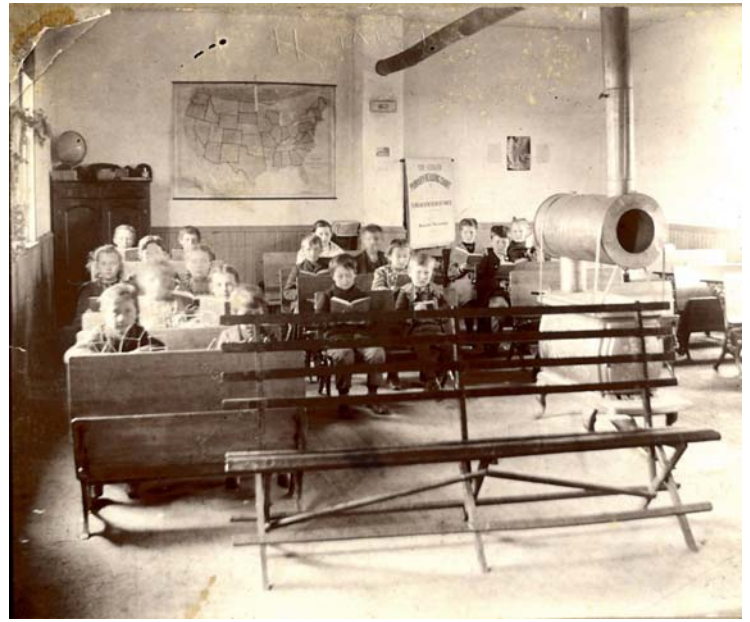
The first month of school 47 children were enrolled. The attendance was good considering the fact that work on the farms was late that fall and if a majority of the scholars attended school 40 days more



Bergen Township Rural Country Schools:

District # 5
District # 19
District # 35
District # 48
District # 70
District # 84

Schoolhouse location =



School District # 84, “Whittier School”

1904-1905 Photo showing the interior of District #84 schoolhouse, Bergen Township.

Students are shown seated at desks and holding open books. They are not individually identified but a list of scholars is on the reverse. A heating stove is at center of the room; a globe, United States map, and Primary Reading Chart are visible teaching aids. [Note: District #71, Sumter Township is also called Whittier School Instructor: Charles L. Hess (photo on reverse); Trustees: Wm. Dammann, A. A. Anderson, H. G. Kuhlmann.

Scholars: Theodore Mathews, Earnest Belter, Clara Lunow, Ida Lampher, Otto Mathews, Ida Tonn, Reinhold Mathews, Arthur Severson, Fred Schroeder, Melinda Kuhlmann, Henry Schroeder, Erick Belter, Martin Michaletz, Alma Anderson, Ella Kuhlmann, Albert Anderson, Olaf Severson, William Michaletz, Herman Belter, Odella Boesche, Arthur Kuhlmann, Dora Dammann, Gusta Schroeder, Alvin Anderson, Edwalt Dammann, Lydia Schutte, Herbert Dammann, Alfred Schutte, Julius Tonn, Palmer Schutte, Eda Severson, Herman Schroeder, Henry Michaletz.

**MCHS Photo Collection
Accession # 2014-0070-017**

that winter, the board would be able to draw sufficient state aid to almost pay the teacher’s salary. The first teacher was Sophia Enerson and her monthly wages were \$35 the first year and \$36 the second year.

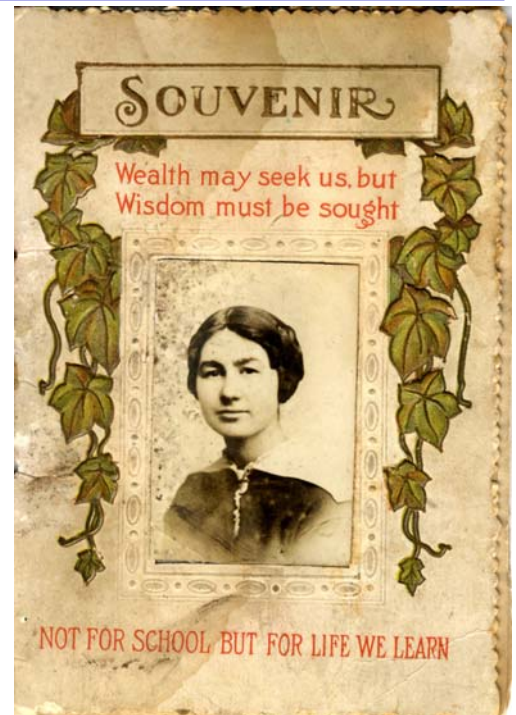
When the enrollment dropped below 10 children in 1944, they closed the school and the children were transported to the public school in Lester Prairie. After the country schools consolidated with Lester Prairie Public School in 1954, the land reverted back to the William Dammann farm and the school building was moved to his farm and was used as a granary.

Spotlight on the Collection/Artifact of the Month:

Donor: Sandi Bullert Lietz

Accession #: 2008-0408-001

History: 1914 Souvenir card from Baker's Lake School-District #32, Penn Township, McLeod County. Evelyn I. Plaisance, Teacher, whose photo is on the front cover. Pupils: Clarence Arnold, Luella Arnold, Milton Arnold, Violet Arnold, Walter Arnold, Ceaslen Albrecht, Hilmert Albrecht, George Bullert, Richard Bullert, Irene Bullert, Clifford Hagen, Edna Hagen, Ervin Hagen, Henry Hagen, Mary Hagen, Ora hagen, Walter Knick, Bernard Knick, Zelta Knick, Bertha Schmidt, Herman Schmidt, Richard Wendland, Conrad Wendtlandt, Albert Wilhelm, Andrew Wilhelm, Ernest Wilhelm, Lambert Wilhelm, Viola Wilhelm, Carl A. Anderson, Henry Streich, Fred Knick, Louis Wilhelm.



Donor: Karen Paehlke

Accession #: 2008-0446-001

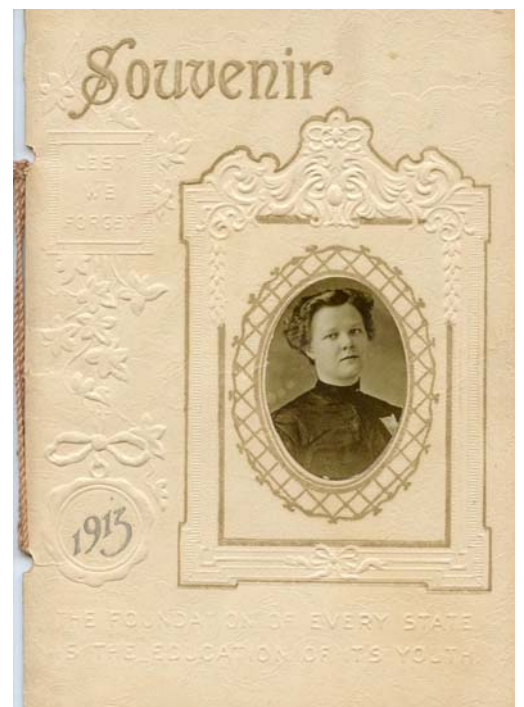
History: 1905, 1906, 1907 Souvenir of Riverside School-District #6. Photo of Emily E. Jenson, Teacher, is on the front cover. School officers: Fred Hietz, Clerk, Joseph Kerchiel, Director, John Podhrasky, Treasurer, L.P. Harrington, County Superintendent. Pupils: Emily Miska, Stanley Pokorny, Alice Miska, Wilhemina Pokorny, Freddie Miska, Alice Kerchiel, Henrietta Pokorny, Mamie Bednar, Jennie Pokorny, Emma Havelka, Charley Pokorny, Joe Havelka, Rose Pessina, Eddie Ellis, Ella Pessina, Alice Podhrasky, Carrie Cacka, Arthur Kerchiel, Charley Podhrasky, Eddie Kerchiel, Mary Podhrasky, Johnnie Havelka, Helen Pulkrabek, Ethel Miska, Clara Pulkrabek, Tony Pokorny, Joe Pessian, Mable Brabec, Theodore Pessina, Clarence Barbec.



Donor: William Schwarze

Accession #: 2015-0023-001

History: 1913 Souvenir booklet from Fairview School-District #4, Sumter Township. A photo of teacher, Elsie H. Karstens is on the cover. Pupils: Bessie Block, Ray Block, Edith Block, William Heintz, Wallace Heintz, Ricka Hagen, Henry Hagen, Alice Klopffleisch, Reuben Klopffleisch, Florence Klopffleisch, Edna Kottke, Lilly Kottke, Dorothy Peters, Bernice Peters, Dorothea Schwarze, Milton Schwarze, George Schwarze, Ruby Schwarze, Iola Urbach, Lenora Klawitter, Blanche Klawitter, Franziska Janke. Clerk, C.H. Peters; Chairman, F. C. Schwarze; Treasurer, H. B. Hagen



Donations & Memorials:

Log Cabin Home Fund:

General Fund:

*In honor of Judy & Jerry Kadlac's 50th wedding anniversary from Barb & Clyde Peterson;
Ronald Pagen; Luella Ristow; Nancy Todd; Gilbert Debner*

Archives Fund:

Heritage Garden Fund:

Louise Carlson

Endowment Fund:

In memory of Danny Rickert from Ron & Karen Sommerdorf

Technology Fund:

Gilbert Merkle

Annual Support Fund:

*Helen Piehl; Robert & Jacqueline Pendergast; AEM Mechanical Services, Inc; Joan & Dale Ewald;
Mary Alsleben; Shirley Cutlar; Emmy Lindeman; Joan & Larry Karg; Leona Donnay; Hutch Café;
NU-Telecom; Roger & Lois Krantz; Marlys Fredrick; Gary Halvorson; Jamie Mahoney;
Robert & Susan Olson; Littfin Lumber Co; Eugene & Patricia Otto; Norma McNeil;
Lyall Schwarzkopf; Margaret Hoffman; Larry Watson; Jay & Margaret Alrick;
Dorothy Klawitter; Joyce & Les Young; Dobratz Hantge Chapel; Gerald & Ida Karstens*

Restoration Fund:

Welcome New and Life Members:

**Nancy Nelson, Elk River, MN; Marion Neisen, Hutchinson, MN
Mavis Wheeler, Hutchinson, MN
Carla Hooper and family, Hutchinson, MN**

Museum Artifact Donations: *The Society thanks you for your donation!*

John Lyman

Julie Jensen

Carl Drahos

Annette Zimmerman

Karen & Glenn Paehlke

Hutchinson Health Auxiliary

Tom Mikulecky

Darrol Bussler

Beverly Baumetz

Marlys Fredrick

George Field

Melva Solseth

Lori Kramer

Nancy Todd

Alice Fransen

Brad & Bonnie Hahn

William & Joan Arndt

Ronald & Judy Ondracek

Donations Needed for the Collection:

*The Museum is missing photos and stories from the following Country Schools:
Dist. #21, 23, 28, 43, 44, 45, 50, 52, 53, 54, 55, 56, 57, 61, 62, 65, 66, 68, 70, 71, 75, 82*



McLeod County Historical Museum's Historical Happenings Radio Show

*Tune into AM 1260 **KDUZ***

*the last Friday afternoon of each month to
catch the latest in Museum Programs & Events,
Local History, and Special Guests!*



McLeod County Historical Society Business Sponsors:

(Please support the local businesses who support the preservation of McLeod County History)

*~ Citizens Bank & Trust ~ Dundee Floral ~ Crow River Floral ~ Ace Hardware
~ The Village Shop ~ Main Street Sports Bar ~ Littfin Lumber Co. ~ Benny's Meat Market ~
~ Family Farms Wholesale of Minnesota ~ Crow River Winery ~ McCormick's ~*

Make a donation, become a member or make a purchase from our Gift Shop, now accepting:



Return Service Requested

320-587-2109 / asa@hutchtel.net
Hutchinson, Minnesota 55350
380 School Road NW

**McLeod County
Historical Society**

NONPROFIT ORG.
U.S. POSTAGE PAID
PERMIT NO. 82
HUTCHINSON, MN
55350